



SEA AND WILD NATURE NEAR COPENHAGEN

In Tuborg Strandeng's hilly terrain, iconic buildings sprout, shaped by the elements and the landscape which surrounds them. The result is a unique area where you can live with free access to the sea and the pristine meadows – near Copenhagen.

EXCLUSIVE HOMES IN A NEW LEAGUE

Tuborg Strandeng's 100,000 m² is the very last stretch of coast to be developed in Gentofte Municipality. With the large area which has been transformed into wild meadow, it is the only area of its kind to date. In other words, the characteristic surroundings and sculptural construction create exclusive apartments in a league which has not previously been offered for rent in Denmark.



Tuborg Strandeng has been created by the internationally acknowledged architectural firm Lundgaard & Tranberg Architects, which is now providing Copenhagen with yet another architectural landmark.





ENJOY LIFE AT BAKKEDRAGET

At Bakkedraget you have a view of the Øresund and, at the same time, you avoid the hassle of house maintenance. Here you can have a morning swim from one of the sets of bathing steps in the wall of boulders along the coast – or lay your paddleboard or kayak in the water. Of course, you can also just enjoy the sun and the view from your balcony or terrace while breathing in the fresh air and the scent of the wild vegetation on the salt meadow. Tuborg Harbour is only a short stroll away, if you have a boat.

AN EXCITING OPEN COURTYARD AREA

In the wild and hilly landscape of the open courtyard area, you will find small, cultivated rooms to explore and built-in terrace levels with wild vegetation. Here you can meet your neighbours who, like you, want to live near the water in an area with a truly special atmosphere, with the city close by.



BRIGHT EXCLUSIVE APARTMENTS

MOVE-IN DATE: SEPTEMBER 2021

- The three buildings at Bakkedraget consist of 124 exclusive homes. The building heights vary from three to six floors, with exciting leaps in the facades and partly roofed balconies.
- The exclusive apartments vary from 107–220 m² with 3–5 rooms.
- Many of the apartments have several balconies, terraces and/or rooftop terraces.
- In several of the apartments you will have a view over the sea and a 270° panoramic view.
- The possibility of private parking
 - You can rent several parking booths, the first one, however, is for free.
- There is an underground parking facility with direct access to each stairway – including a bicycle cellar.





THE BUILDINGS IN THE AREA

Tuborg Strandeng consists of Kysthusene 1–5, which are right by the water, and Bakkedraget, exclusive rental housing located in the hilly landscape. In the future, a building of 32 exclusive rental apartments will sprout up – in the opposite corner of the Strandengen.

ARCHITECTURE FORMED BY THE LANDSCAPE

The buildings of Bakkedraet are on several levels and floors, and look as though they were formed by the landscape which surrounds them. The hilly terrain continues into the ground floor apartments with their different levels, stairs and extra floor-to-ceiling height to street level.

The transverse concrete beams provide the solid building with a horizontal, urban look, a reference to the area's industrial past as a brewery area.

The concrete beams on the facades have a timber structure which refers to nature. The sand-coloured bricks in the masonry match the natural stone by the water and the sand on the beach.

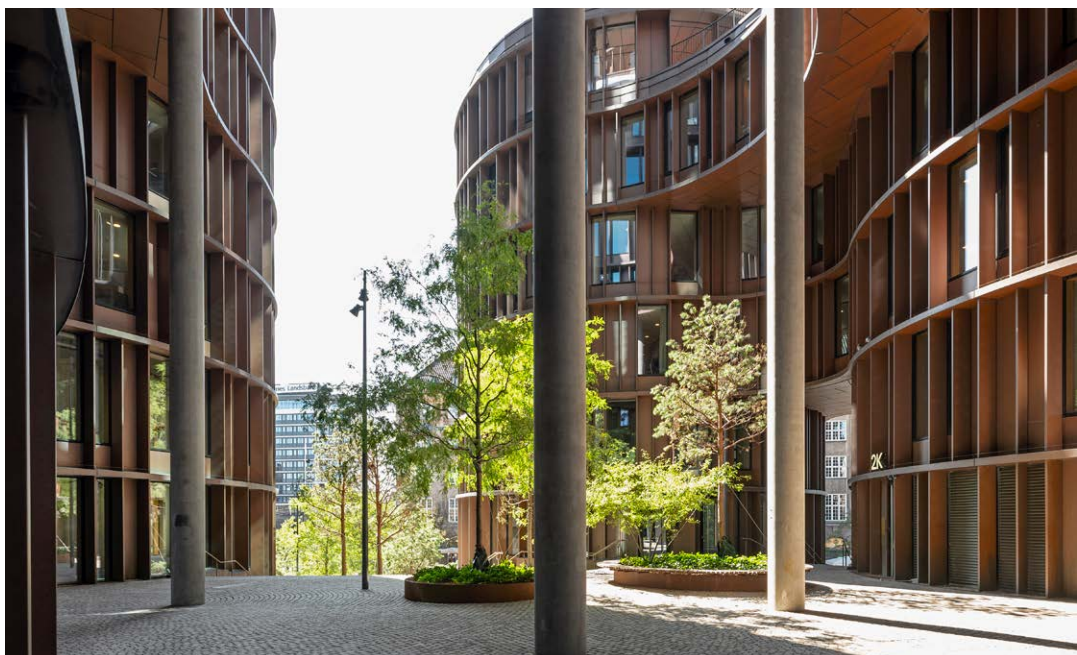
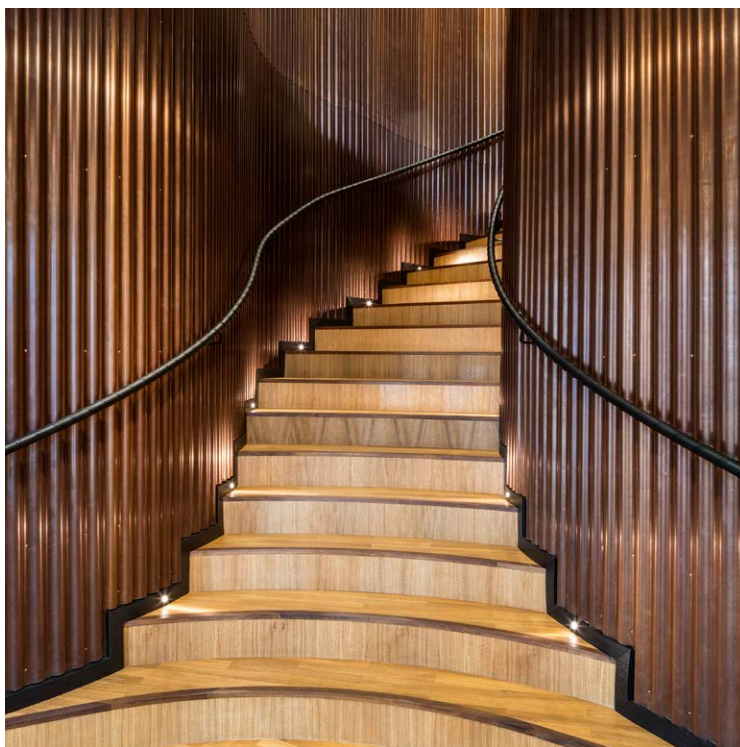






LUNDGAARD & TRANBERG ARCHITECTS

Tuborg Strandeng was created by the internationally recognised architectural firm Lundgaard & Tranberg Architects, also known for Skuespilhuset, Tietgenkollegiet, Axel Towers and other award-winning buildings.



The formal aspects of Bakkedraget take their starting point in the classical, minimalistic Danish architectural tradition – with a modern take.

SUNNY BALCONIES IN THE MORNING AND EVENING

Bakkedraget is situated so you can enjoy your view over both the meadow and the Øresund. Most apartments get both morning and evening sun. The variation of building heights provides for many penthouse apartments and rooftop terraces and balconies, making the outdoor spaces more intimate and private. The balconies often have brickwork on several sides, creating shelter even on windy days.

Many of the apartments have several balconies, rooftop terraces and/or terraces. The terraces are surrounded by brickwork to most sides, but are often open at one end for a better view.



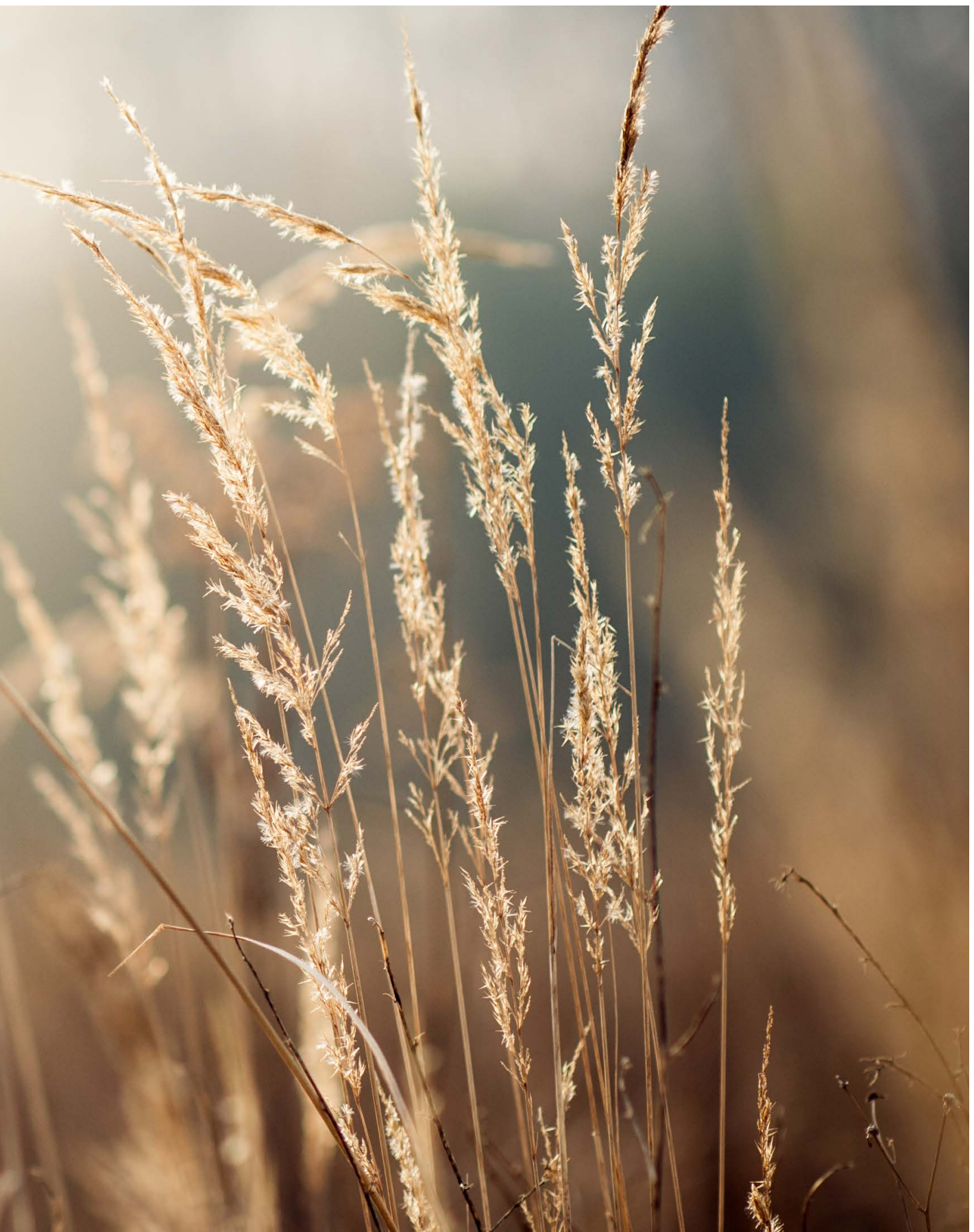




RESOLVING OUTSIDE AND INSIDE

Bakkedraget has a special sense of space, where the boundaries between inside and outside dissolve. In addition to balconies and potential rooftop terraces, there are French which let in the outside life. The floors and ceilings continue outside without any shift, and large windows reflect the sky and open up the façade to let the light in.

The roofed balconies often have an area without any roof, so you can always reach a more open place.



Near the coast you will find various beachy plants – from lyme grass and English grass to hawthorn, sea buckthorn and dwarf pine. Further up the meadow, beside the low ground cover, there is slightly denser planting, with, for instance, forest pine, elder and honeysuckle.



THE EXPERIENCE OF PRISTINE TERRAIN

Tuborg Strandeng's large, hilly area has a special vegetation and design which gives you the feeling of being in pristine and natural terrain, a lot like Tisvilde Hegn.



Between plants and hills, a number of nature trails meander, and the area's few roads have a coating of gravel-like asphalt, making the roads

look like gravel roads. Cars are hidden and parked in underground parking basements, beautifully concealed under the landscape.

MANY TYPES OF APARTMENTS

At Bakkedraget there are more than 40 significantly different types of apartments, with differing floor plans and outdoor spaces.

LIGHT DÉCOR & READY TO MOVE IN

The exclusive apartments have wide open spaces, white-painted walls and bright and inviting kitchens – and are ready for you to move in. You can easily make your mark on and customise the décor.

The window frames and doors in solid oak and the bright and beautiful oak floors invite nature in.





A HOME CLOSE TO THE CENTRE OF COPENHAGEN

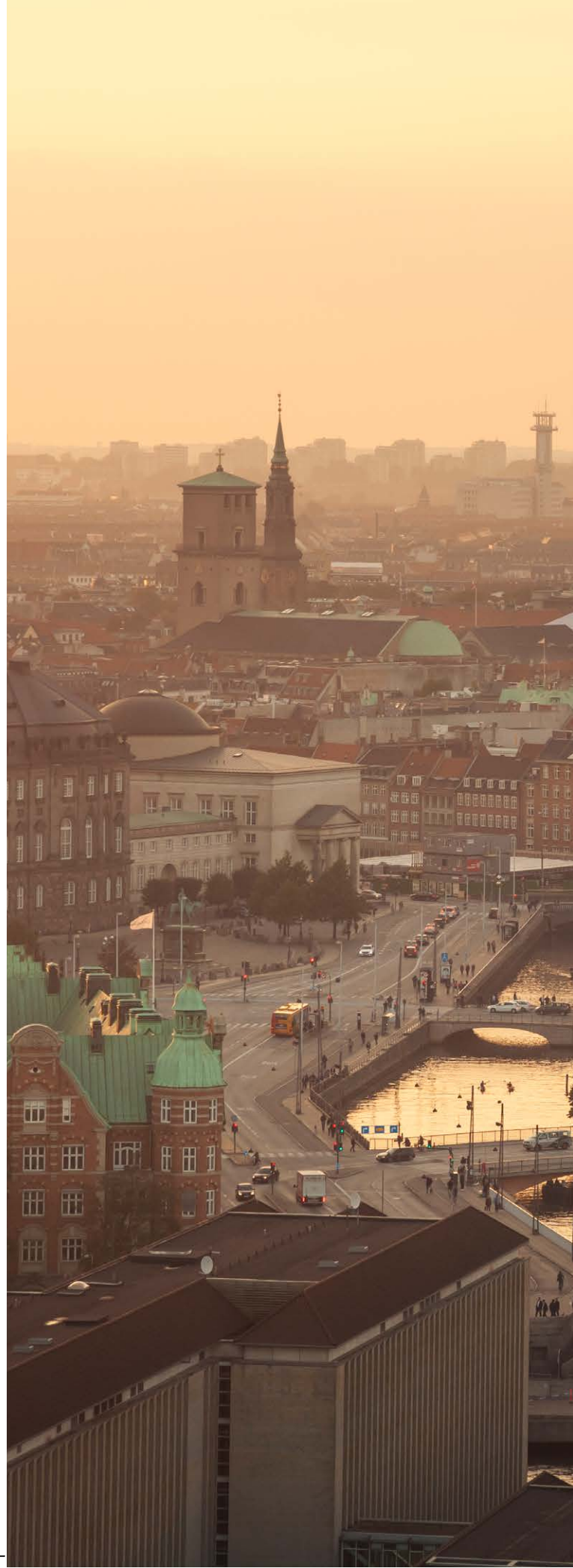
In Tuborg Strandeng you are in Gentofte Municipality, but you are closer to the centre of Copenhagen, where you can shop, eat at some of the Nordic region's best restaurants, or find lots of cultural experiences.

THE LOCAL SETTING OF HELLERUP

You will have Hellerup right in your back garden. Strandvejen, a lovely shopping street, has more than 200 different shops, cafés, ice cream shops and delicious takeaway places. The Waterfront Shopping Centre at Tuborg Harbour also houses both a fitness and a wellness centre, as well as places to eat.

GOOD SCHOOLS AND NURSERIES

If you have children, Bakkedraget is near to the best state and private schools like Hellerup Skole, Tranegårdsskolen and Bernadotteskolen. Hellerup International School and nurseries are all in the same league.





PLEASE CONTACT US

home udlejning
Lone Bøegh Henriksen A/S
Telephone: +45 33 33 03 05
E-mail: bakke draget@home.dk

Nordic Housing
+45 70 23 70 80
info@nordichousing.dk
www.nordichousing.dk

//

tuborgstrandeng.dk

Architects:
Lundgaard & Tranberg Architects



Disclaimer // All photos of Tuborg Strandeng are guiding illustrations. The brick colours are indicative, and the final colour may vary. The landscape may vary from what is shown.